

The 16th International Congress of the World Federation of Occupational Therapists
in collaboration with the 38th Japanese Occupational Therapy Congress and Expo
2014



2014

ANNUAL REPORT



PACIFICO YOKOHAMA

Corporate Profile

Company Name	PACIFIC CONVENTION PLAZA YOKOHAMA	
Abbreviated Name	PACIFICO YOKOHAMA	
Location	1-1-1, Minato Mirai, Nishi-ku, Yokohama 220-0012, JAPAN	
President	SUZUKI, Takashi	
Date of Establishment	June 3, 1987	
Capital	7,565,000,000 yen	
History		
	June 1987	Pacific Convention Plaza Yokohama is established (Chairman: HANAMURA, Nihachiro / President: TAKAGI, Fumio). Initial capital is 4,400,000,000 yen.
	June 1988	Capital increases to 8,800,000,000 yen.
	December 1988	Construction work of Conference Center and Hotel complex is started.
	June 1989	Capital increases to 11,000,000,000 yen.
	October 1989	Construction of Exhibition Hall (Phase I) is started.
	June 1991	Capital increases to 15,986,000,000 yen.
	July 1991	Construction of Conference Center and Hotel complex is completed. Completion ceremony is held on July 29. Full operation is started on August 22.
	September 1991	Capital increases to 16,801,000,000 yen. Construction of National Convention Hall of Yokohama is started.
	October 1991	Construction of Exhibition Hall (Phase I) is completed. Completion ceremony is held on October 12. Full operation is started on October 13.
	April 1994	Construction of National Convention Hall is completed. Completion ceremony is held on April 25. Full operation is started on May 19.
	July 1999	Construction of Exhibition Hall (*Phase II) is started. *Doubling the exhibition space and additional construction of Annex Hall.
	June 2000	Chairman: TAKAGI, Fumio / President: BABA, Sadao.
	July 2001	Construction of Exhibition Hall (Phase II) is completed on July 30.
	June 2004	President : OKAMOTO, Akira.
	August 2006	Capital decreases to 7,565,000,000 yen
	June 2009	President : FUKAGAWA, Kuniaki.
	March 2010	Upgrade construction of Conference Center is completed.
	April 2010	President : KOBORI, Takashi.
	June 2013	President : MITSUDA, Kiyotaka
	June 2014	President : SUZUKI, Takashi
Main Business	<ol style="list-style-type: none">1. Planning, promoting and holding international and domestic conferences and various kinds of cultural and academic events.2. Planning, promoting and holding international and domestic trade shows and exhibitions.3. Leasing and managing conference facilities, exhibition halls, accommodation facilities and associated facilities.4. Managing and operating parking lots and parks, etc.5. Liability insurance agent business	

Investment Share

Stock Information

(1) Number of shares

Total Number of Authorized Shares 399,000

Total Number of Issued Shares 333,520

(2) Number of Shareholders

244

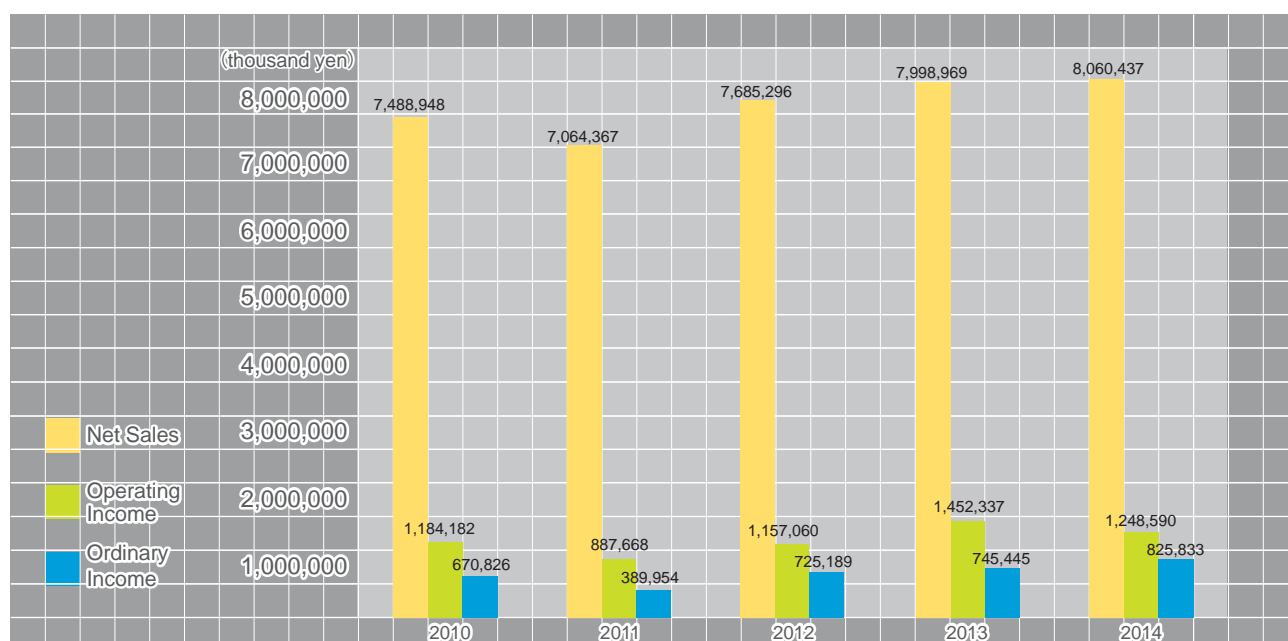
(As of March 31, 2015)

Main Shareholders	Number of shares	Percentage of shareholding (%)
City of Yokohama	82,000	24.58
Kanagawa Prefecture	40,000	11.99
Development Bank of Japan Inc.	32,000	9.59
JFCC Investment association for MM 21	12,000	3.59
The Bank of Tokyo-Mitsubishi UFJ, Ltd.	6,820	2.04
The Bank of Yokohama, Ltd.	6,640	1.99
TOKYO GAS Co., Ltd.	4,000	1.19
Tokyo Electric Power Company, Incorporated	4,000	1.19
NIPPON TELEGRAPH AND TELEPHONE EAST CORPORATION	4,000	1.19
Mizuho Bank, Ltd.	3,880	1.16

Selected financial data

■ Sales record and assets

Division	2010	2011	2012	2013	2014
Net Sales (1,000 yen)	7,488,948	7,064,367	7,685,296	7,998,969	8,060,437
Operating income (1,000 yen)	1,184,182	887,668	1,157,060	1,452,337	1,248,590
Ordinary income (1,000 yen)	670,826	389,954	725,189	745,445	825,833
Net income (1,000 yen)	9,240	395,362	429,806	390,768	470,318
Total assets (1,000 yen)	41,888,992	39,698,732	38,778,847	39,266,603	39,544,124
Net assets (1,000 yen)	8,740,855	9,136,218	9,566,024	9,956,792	10,427,111



Outline of Facilities



Facility name		Outline	Building ownership	Site ownership	Management
①	Conference Center	Approximately 50 rooms of various sizes	PACIFICO YOKOHAMA	City of Yokohama	PACIFICO YOKOHAMA
②	Hotel	Approximately 600 guest rooms	PACIFICO YOKOHAMA	City of Yokohama	InterContinental Yokohama Grand
③	Yokohama International Organization Center	<ul style="list-style-type: none"> Yokohama Association for International Communications and Exchanges (YOKE) 5 International organizations (ITTO,IUC,CITYNET,WFP,FAO) 	International Affairs Bureau, City of Yokohama	City of Yokohama	PACIFICO YOKOHAMA (Only the facility management)
④	National Convention Hall of Yokohama	The only one of the National Convention Hall in Eastern Japan		City of Yokohama and Government of Japan (half share)	PACIFICO YOKOHAMA
	Marine Lobby (1F)	The multipurpose lobby of 1,400m ² Designed to evoke the image of seashore	PACIFICO YOKOHAMA		
	Hall (2F)	One of the Japanese largest theater with approximately 5,000 seats	Ministry of Finance, Government of Japan		
⑤	Exhibition Hall	A 20,000m ² column-free space dividable into 4 units	PACIFICO YOKOHAMA	City of Yokohama	PACIFICO YOKOHAMA
⑥	Annex Hall	A 1,350m ² dividable into 6 units	PACIFICO YOKOHAMA	City of Yokohama	PACIFICO YOKOHAMA
⑦	Minato Mirai Public Parking Lot	Underground parking lot with approximately 1,200 cars	Yokohama City Construction Finance Corporation	City of Yokohama	PACIFICO YOKOHAMA
⑧ - 1	Pedestrian Deck	Connected to each facility	Port and Harbor Bureau, City of Yokohama	City of Yokohama	PACIFICO YOKOHAMA (designated manager)
⑧ - 2	Plaza	A circle event space			
⑧ - 3	Pukari-sanbashi Pier	Floating pier			
⑧ - 4	Rinko Park	The largest park with greenary and panoramic view of Yokohama Bay in Minato Mirai area			
⑨	Bus/Large Vehicle Parking Lot	Parking lot with 40 large-sized vehicle	-	City of Yokohama	PACIFICO YOKOHAMA
⑩	Block 20	Vacant land (approx. 22,120m ²) New convention facility under planning by City of Yokohama	-	City of Yokohama	-

Sales Record

National Convention Hall

Number of Events, Occupancy Rate & Participants

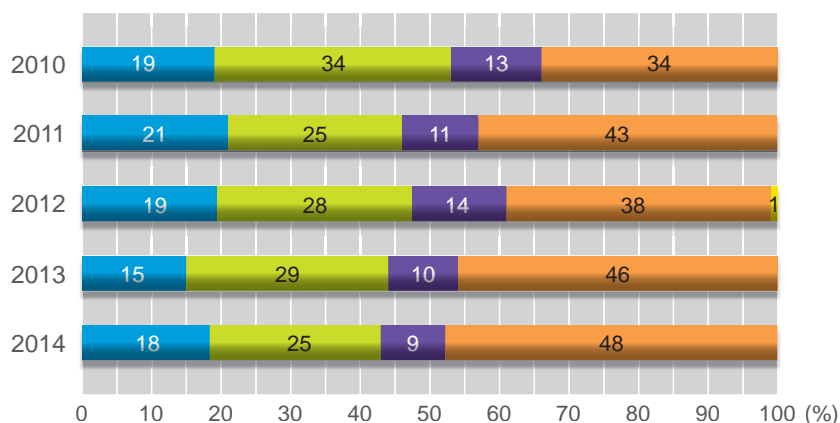
Fiscal Year	2010	2011	2012	2013	2014
Number of Events	102	132	135	143	145
Occupancy Rate in Days (%)	69	72	78	77	75
Participants (1,000 persons)	648	747	717	813	788



*Occupancy rate in Days = number of days divided with available rental days (365 or 366 days per year minus 24 closed days for facility inspection)

Category

- Meeting, Seminar, Symposium
- General Meeting, Assembly, Ceremony
- Corporate Incentive
- Concert
- Other



Conference Center

Number of Events, Occupancy Rate & Participants

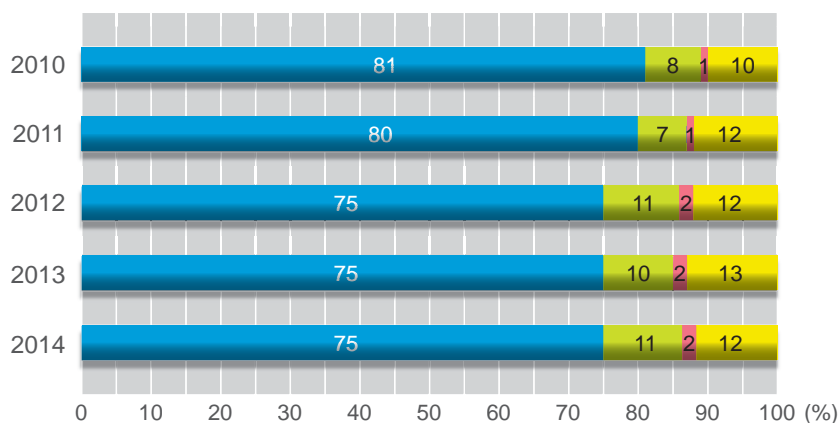
Fiscal Year	2010	2011	2012	2013	2014
Number of Events	370	432	421	443	395
Occupancy Rate in Days (%)	62	59	67	66	69
Participants (1,000 persons)	422	453	500	526	587



*Occupancy Rate in Days = average number of days when main meeting rooms (Main Hall, 301 to 304, 501, 502, 503) are occupied divided with available rental days (365 or 366 days per year minus 24 closed days for facility inspection)

Category

- Meeting, Seminar, Symposium
- General Meeting, Assembly, Ceremony
- Party
- Other



Sales Record

Exhibition Hall

Number of Events, Occupancy Rate & Participants

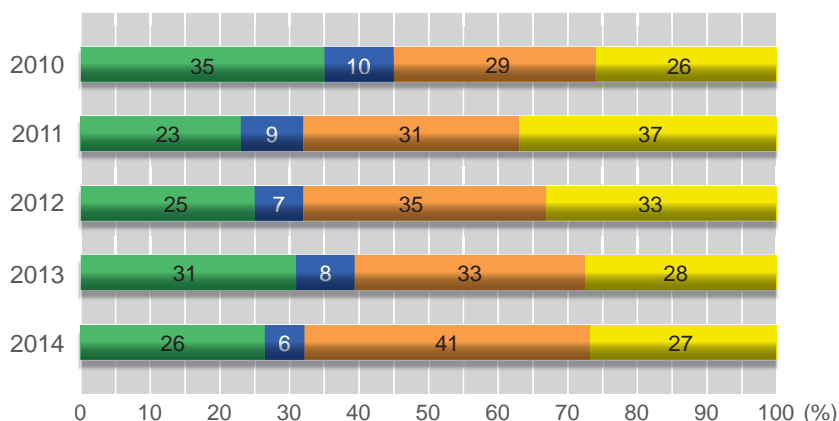
Fiscal Year	2010	2011	2012	2013	2014
Number of Events	128	153	173	173	199
Occupancy Rate in Days (%)	61	59	72	74	79
Participants (1,000 persons)	1,725	2,061	2,407	2,644	3,211

* Occupancy Rate in Actual Area = occupied area per year divided with available rental days (365 or 366 days per year minus 24 closed days for facility inspection) × Area



Category

- Exhibition, Trade Show
- Sales
- Event
- Other



Annex Hall

Number of Events, Occupancy Rate & Participants

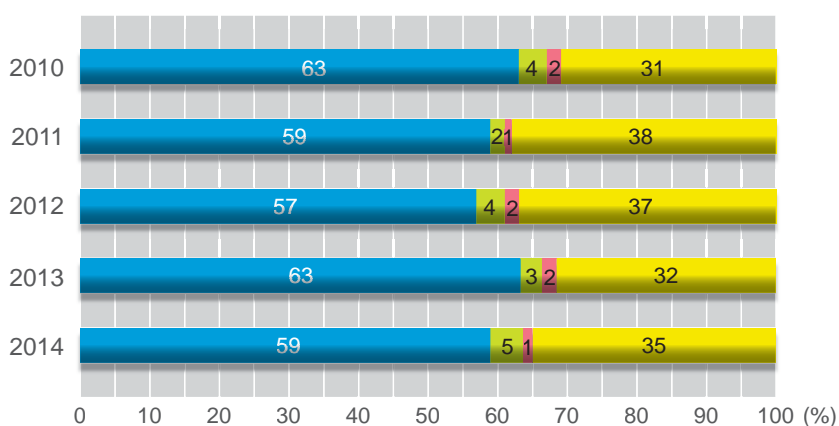
Fiscal Year	2010	2011	2012	2013	2013
Number of Events	240	228	244	271	241
Occupancy Rate in Days (%)	60	54	65	61	59
Participants (1,000 persons)	294	278	268	250	247

*Occupancy Rate in Days = average number of days when main meeting rooms (F201 ~ F206) were occupied divided with available rental days (365 or 366 days per year minus 24 closed days for facility inspection)



Category

- Meeting, Seminar, Symposium
- General Meeting, Assembly, Ceremony
- Party
- Other



Sales Record

Major events in 2014

- **The 61st Annual Meeting of the Japanese Society of Anesthesiologists**
5/15(Thu) - 17(Sat)
- **The 7th Asia Beauty Expo**
5/26(Mon) - 27(Tue)
- **Japan ASEAN + INDIA Travel Mart 2014**
6/3(Tue) - 4(Wed)
- **IAUP XVII Triennial Conference 2014 Yokohama**
6/11(Wed) - 14(Sat)
- **16th International Congress of the World Federation of Occupational Therapists in collaboration with the 48th Japanese Occupational Therapy Congress and Expo**
6/18(Wed) - 21(Sat)
- **XVIII World Congress of Sociology**
7/13(Sun) - 19(Sat)
- **The Growth and Behavior of Dinosaurs in Yokohama**
7/16(Wed) - 8/28(Thu)
- **TRANSFORMERS EXPO**
8/9(Sat) - 17(Sun)
- **16th Annual Meeting International Society of Addiction Medicine**
10/2(Thu) - 6(Mon)
- **The 7th World Dental Meeting in Japan**
10/10(Fri) - 12(Sun)
- **FUKUYAMA MASAHARU CONCERT**
12/23(Tue) - 31(Wed)
- **CP+2015 (Camera & Photo Imaging Show)**
2/12(Thu) - 15(Sun)
- **Asia-ARVO 2015**
2/16(Mon) - 19(Thu)
- **Yokohama Marathon 2015**
3/13(Fri) - 3/15(Sun)





PACIFICO YOKOHAMA

(PACIFIC CONVENTION PLAZA YOKOHAMA)

1-1-1, Minato-Mirai, Nishi-ku, Yokohama 220-0012, JAPAN

U R L: <http://www.pacifco.co.jp>